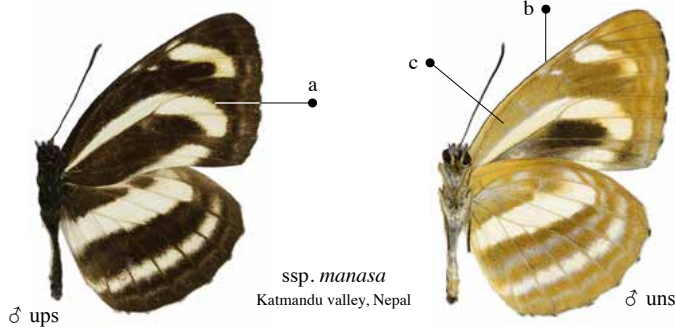
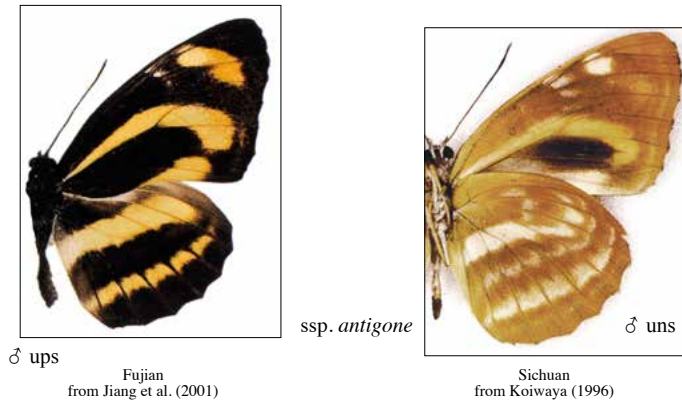


NEPTIS MANASA Moore, 1857



ssp. *manasa*
Katmandu valley, Nepal



ssp. *antigone*

Fujian
from Jiang et al. (2001)

Sichuan
from Koiwaya (1996)



ssp. *antigone*
Ichang
from Leech (1892-1894)



ssp. *narcissina*
Nidadan, NW Yunnan, China



ssp. *shinkaii*
Tomi, Tangmai, E Tibet

Neptis Manasa Moore, 1857, in Horsfield & Moore, Cat. Lepid. Ins. Mus. Hon. East-India Comp.: 165
Type locality: "N. India"

DIAGNOSTIC CHARACTERS

upf and unf spot in space 3 joined to the cell streak (a);
upf and unf with discal spots adjacent to costa (b);
uph discal and postdiscal bands of the same whitish or yellow colour;
uns ground colour pale ochreous yellow or pale yellow with indistinctly defined white markings;
unf area between costa and cell streak unmarked (c) (lilac spots present in *N. arachne*)

MALE GENITALIA MORPHOLOGY

valva ending with a projection bearing a backward tooth

VARIATION

ups markings white tinged with pale ferruginous in nominotypical *manasa*, usually yellow in the other subspecies

ssp. *antigone* Leech, 1890

Neptis antigone Leech, 1890, Entomologist 23: 37

Type locality: "Ichang" [Yichang, Hubei, China]

ups markings yellow;

uns ground colour pale ochreous-yellow

ssp. *narcissina* Oberthür, 1906

Neptis narcissina Oberthür, 1906, Etud. Lep. comp. [Oberthür] 2: 15

Type locality: "Lou-tse-Kiang" [Upper Salween valley, N Yunnan, China]

ups markings yellow in N Yunnan, both white and yellow in N Thailand and Laos;

uns ground colour pale yellow without ochreous tinge

ssp. *shinkaii* Koiwaya, 1996

Neptis manasa shinkaii Koiwaya, 1996, in Koiwaya, Studies of Chinese Butterflies 3: 252

Type locality: "Tangmai, SE. Tibet" [Tongmai, SE Tibet]

= *tsangae* Huang, 1998, Neue Ent. Nachr. 41: 232

Type locality: Tongmai, SE Tibet

ups markings pure white

ups markings pure white

TAXONOMIC NOTE

Subspecies *shinkaii* looks very close to nominotypical *manasa*; more material would be required to ascertain its taxonomic state.

RANGE

ssp. *manasa*: E Himalayas (Nepal and Sikkim) to N Myanmar, N Thailand and Laos, out of the palearctic region

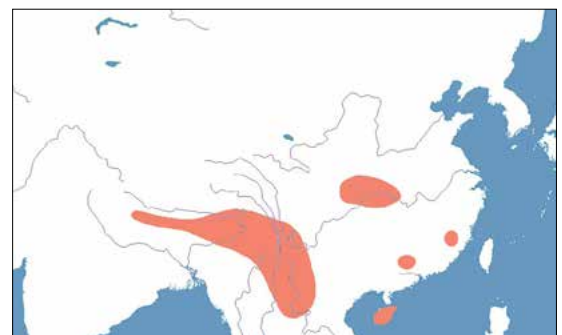
ssp. *antigone*: C China (Hubei, Sichuan, Fujian)

ssp. *narcissina*: C and SE China (Yunnan, Guangdong, Hainan), N Thailand, Laos

ssp. *shinkaii*: SE Tibet

SELECTED REFERENCES

Eliot (1969), Huang (1998)



♂ genitalia valva
ssp. *manasa*
from Eliot (1969)